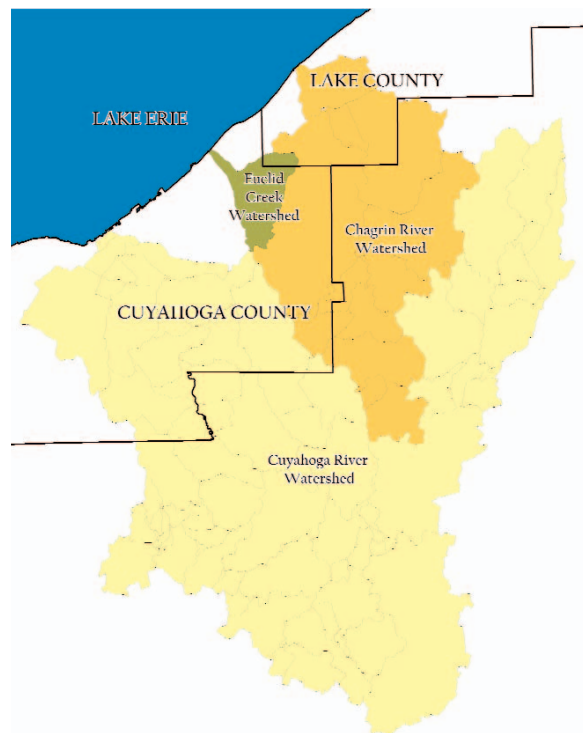


Situated between the mighty Cuyahoga and the pristine Chagrin rivers lies a much smaller but equally valuable stream called the Euclid Creek. Although its neighboring rivers are much more famous, this relatively small watercourse has charm and beauty never before told. Located in eastern Cuyahoga and western Lake Counties, the Euclid Creek Watershed drains 24 square miles before it eventually makes its way into Lake Erie. **See Figure 1.0.**

Figure 1.0 Location of the Euclid Creek Watershed



Due to its close proximity to downtown Cleveland, this area was one of the first to develop east of the city. As people began to settle in this region, the watershed quickly developed into the urban watershed it is today. Currently, the Euclid Creek Watershed is primarily residential with some clusters of industrial and commercial development throughout. In addition, there are several large expanses of land within the watershed including parks, an airport, and golf courses.

Purpose of this Plan

Streams within urban watersheds are fundamentally different from streams within forested, rural or

agricultural watersheds. Stream dynamics are constantly adjusting in an effort to offset a change to the system. This delicate balance becomes much more complex as human influences are concentrated within the watershed. Thus, land use changes directly affect the overall health of the natural stream system.

This plan has been developed in cooperation with the Euclid Creek Watershed Council, the Friends of Euclid Creek, various county, state and regional agencies and officials, as well as community residents. The two main goals of this project are: 1) to improve the health of the creek and 2) to further integrate the waterway into the community fabric as an amenity that improves the quality of life. This document is intended to be used as a decision-making tool for each community as they seek to be a competitive, attractive place to live, work, and visit. The ideas set forth in this plan provide a vision of how the Euclid Creek Watershed could look in the future.

Main Issues

The main problems of this watershed include flooding, water quality, and stream alteration. Flooding in this watershed is caused by the encroachment of housing in the floodplain and increased impervious surfaces. Water quality problems are associated with combined sewer overflows (CSOs), failing septic systems, and runoff from urban areas. Stream alteration, especially the loss of important headwaters, is due to incremental development and ease of alteration.

Open space protection is also very important as much of the land within the watershed has been developed. The last remaining natural areas are necessary to preserve the important ecological functions of the watershed as a whole. Land use and site development practices have a direct impact on the health of the stream.

Euclid Creek and other associated natural features are potential amenities for communities within the watershed. Past development practices often

overlooked these features, resulting in land use patterns that failed to capitalize on these assets. Water features, scenic views, and historic sites were often hidden or removed from the landscape; diminishing the natural character that distinguishes the Euclid Creek Watershed from other areas.